



# MEGACELL CHARGER



## USER MANUAL



[HTTPS://MEGACELLCHARGER.COM](https://megacellcharger.com)

SUPPORTED BY THE DIY COMMUNITY

## Contents

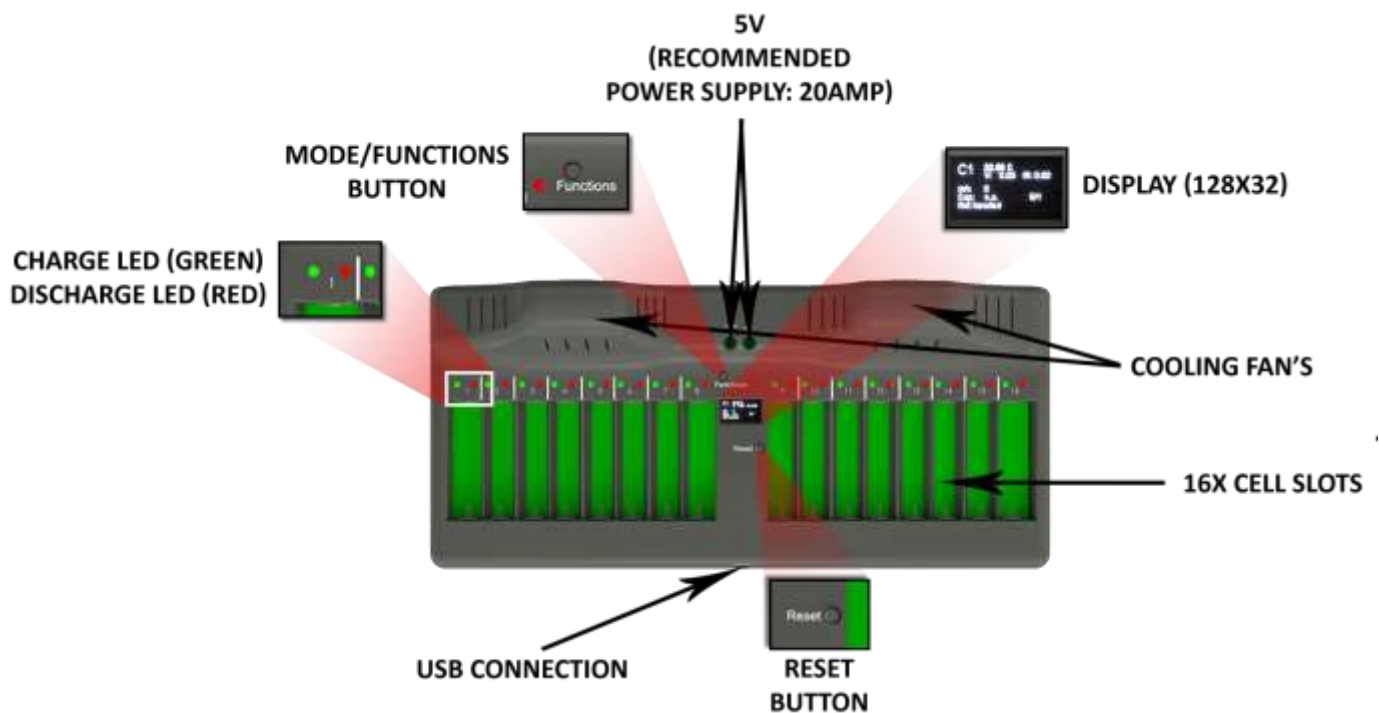
1. Warning: .....	3
2. Charger Interface: .....	3
3. Display Diagram: .....	4
4. Function and Reset Buttons:.....	4
5. Power Supply: .....	5
6. Installing the MegaCell Monitor Software on Your Laptop/PC .....	6
7. Exploring the Simple Mode Interface of the Software .....	8
8. Add the Charger to Your WiFi Network, Using Your Laptop/PC .....	9
9. Add the Charger to Your WiFi Network, Using the WPS Method .....	11
10. Add a Charger and Set-Up. ....	12

Thanks for using MegaCell Charger, a smart charger with 16 independent bays for 18650 Battery/Cells.

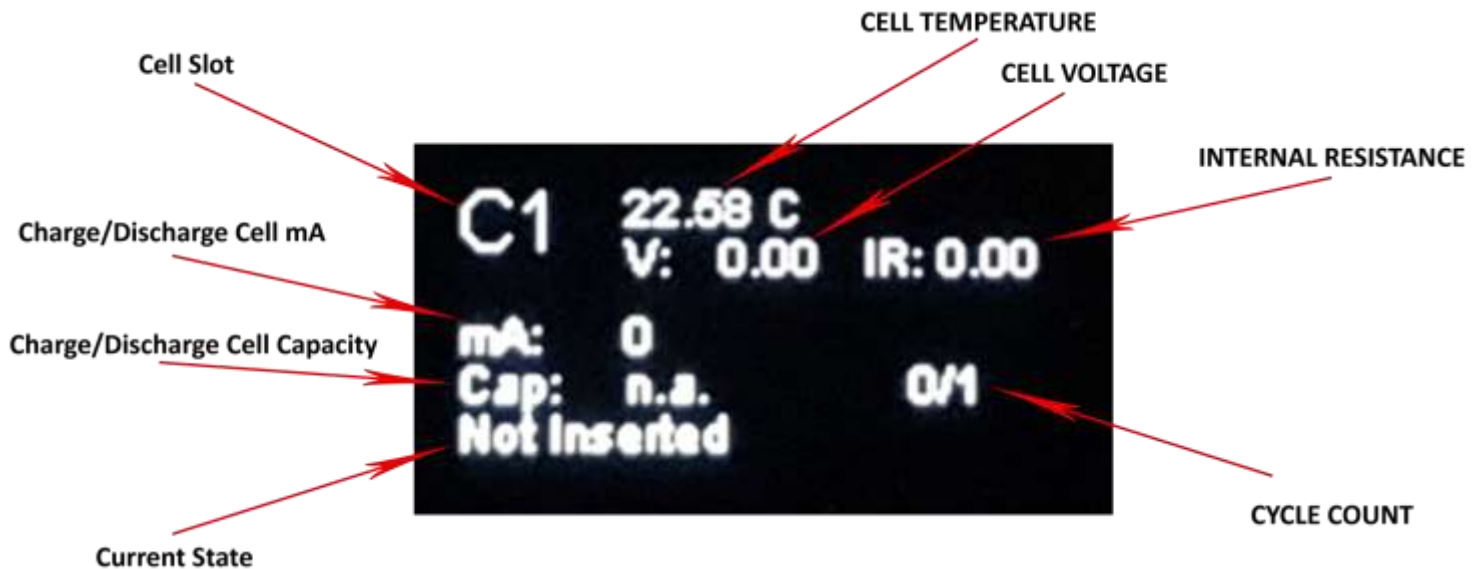
## 1. WARNING:

2. This charger can only charge cylindrical lithium-ion batteries.
3. Please refer to the instructions carefully before use, do not charge cells that do not support at least 1 A charging current.
4. It's normal for cells to get warm during testing process. If they are hotter than 50 Degree Celsius, the testing process will automatically stop.
5. Unplug the power and remove the batteries when you stop using the charger.
6. Only indoor use.

## 2. CHARGER INTERFACE:



### 3. DISPLAY DIAGRAM:



### 4. FUNCTION AND RESET BUTTONS:

Pressing shortly on the functions button will cycle display info for each cell.

Holding down the functions button for more than 2 seconds will cycle through the menu options:

1. Start mCap: Starts the Measure Capacity function
2. Stop mCap: Stops the Measure Capacity function
3. Start Charge: start charging the cells
4. Stop Charge: stop charging the cells
5. Start Discharge: start discharging the cells
6. Stop Discharge: stop discharge the cells
7. IP Information: Shows the charger IP from your network if device is connected
8. Self Test: Starts the self-test for debugging (make sure no cells are inserted in the charger)
9. Factory Reset: Deletes all the settings and returns to the default factory settings
10. Firmware V: Shows the firmware version currently installed
11. Store Charge: Starts the store charge
12. Stop Store Charge: Stops the store charge
13. Exit Push Menu

The reset button, restarts the charger operating system, measuring data is lost and process must restart.

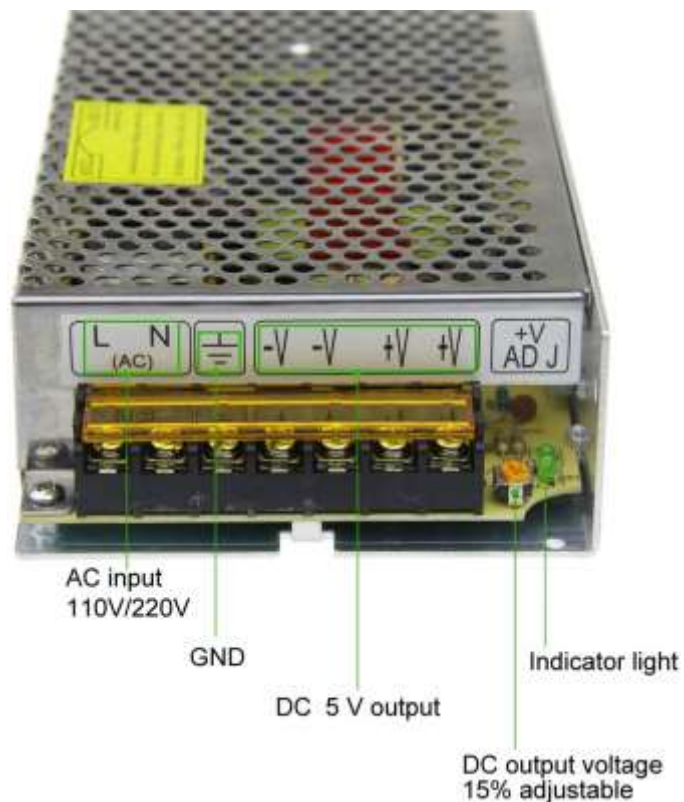
## 5. POWER SUPPLY:



The MegaCell Charger requires a 5 volts power supply to be powered. For the current, we recommend at least 18 Amps. Is recommended using 4mm cross sectional copper wire for the connection between PSU and Megacellcharger.

Please make sure that the power supply is providing 5V. MegaCell Charger requires the voltage to be always +5V, but not higher than

5,6V. after the cables are connected to the charger, you're ready to power your MegaCell Charger.



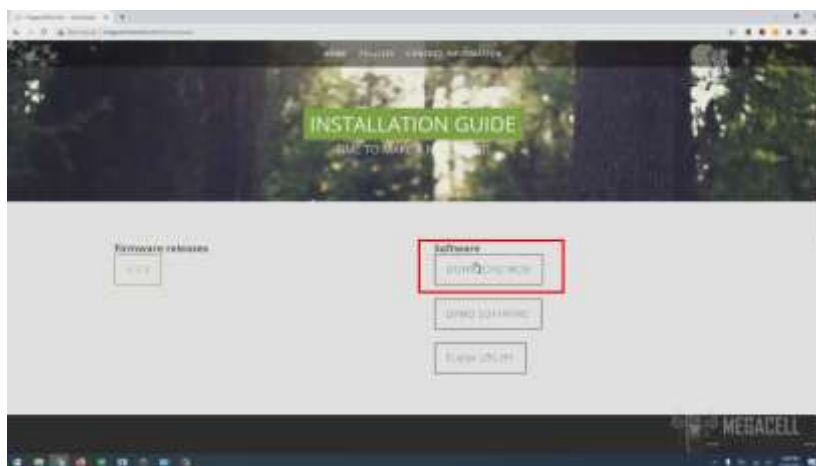


## INSTALLING THE MEGACELL MONITOR SOFTWARE ON YOUR LAPTOP/PC

Head to megacellmonitor.com. At the top of the page you will see tree tabs, go to the home tab and from the sub tabs list click on downloads.

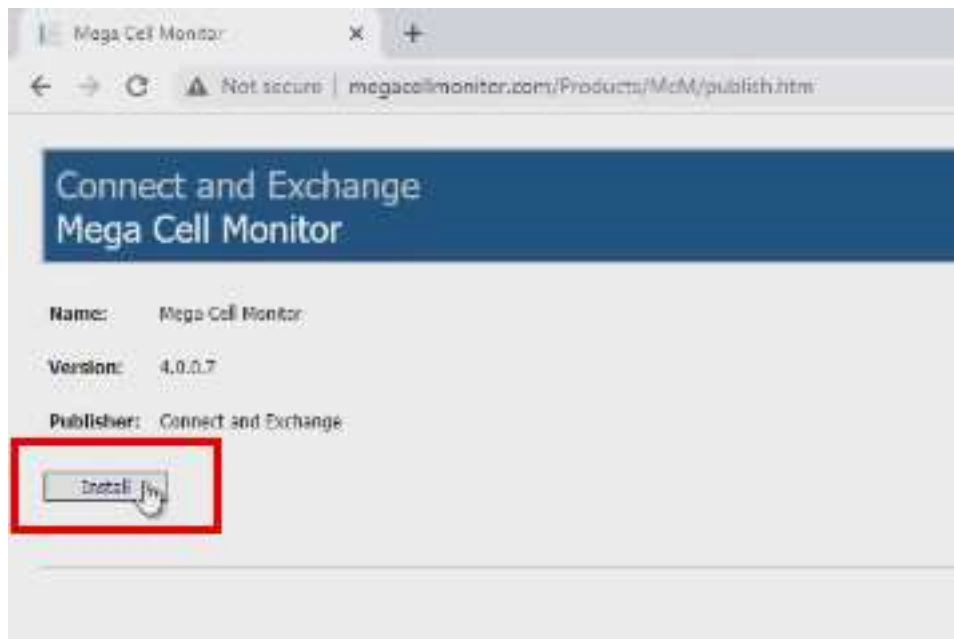


You will be directed to the next page. On this page click on DOWNLOAD MCM button, and you will be redirected to download the MegaCell Monitor Software.

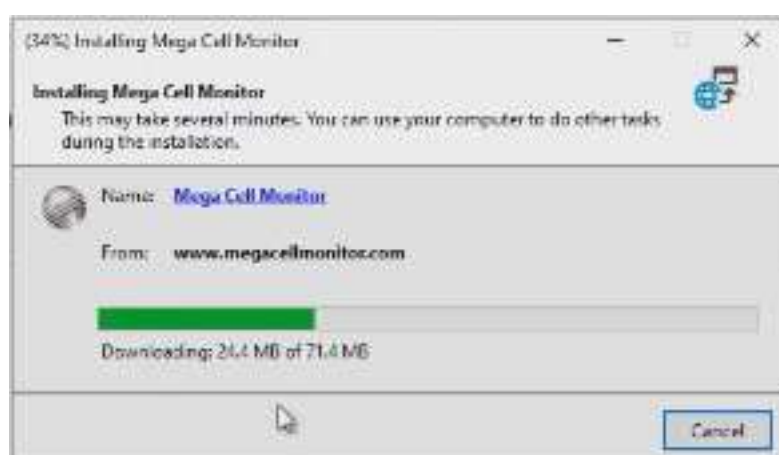


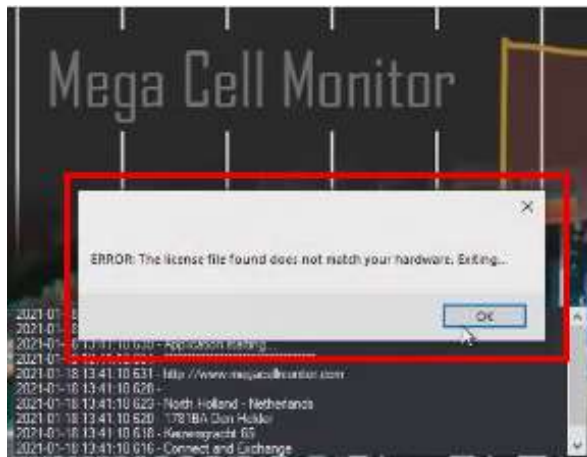
On this page click on the install button, and save the file to your Laptop/PC. Double click on it to install the software. The software will install automatically from our server.





If you get the pop-up window from windows, click on more info and then click the Run anyway button.





The first launch of the software, will try to find if you have a license. If it doesn't detect any license, a pop-up window will appear to ask for an email address.



Type the email address you have purchased the charger, click on close and submit button and the license is automatically installed on your Laptop/PC at the next launch of the software.

## 6. EXPLORING THE SIMPLE MODE INTERFACE OF THE SOFTWARE

The simple mode interface will give you a start on measuring your first cells.

The software has two operations mode: simple and advanced.

It defaults to the simple mode interface, to make the learning process more comfortable to help get you started fast on measuring cells.

Let's go through the buttons and see what each one does.



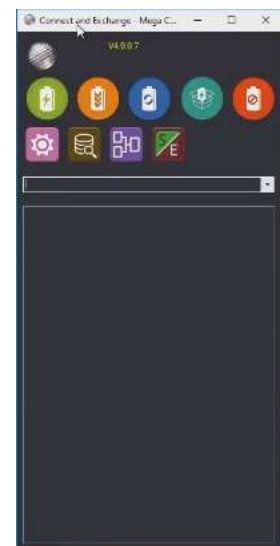
The green button is for charging the cells to the set voltage.



The orange button is for discharging the cells.



The blue button is for measuring the capacity.







The green button with a box icon will get the cells to the store voltage.



The red button will stop any operation.



The pink button will stop any operation.



The brown button will stop any operation.



The purple button will stop any operation.



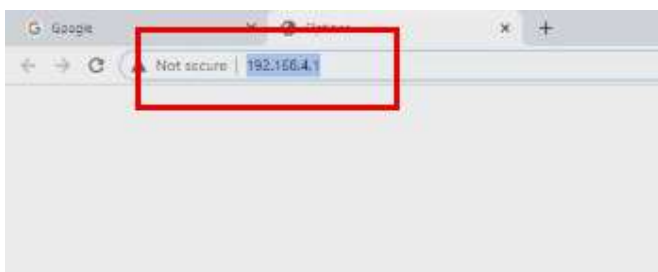
This button will stop any operation.

## 7. ADD THE CHARGER TO YOUR WIFI NETWORK, USING YOUR LAPTOP/PC



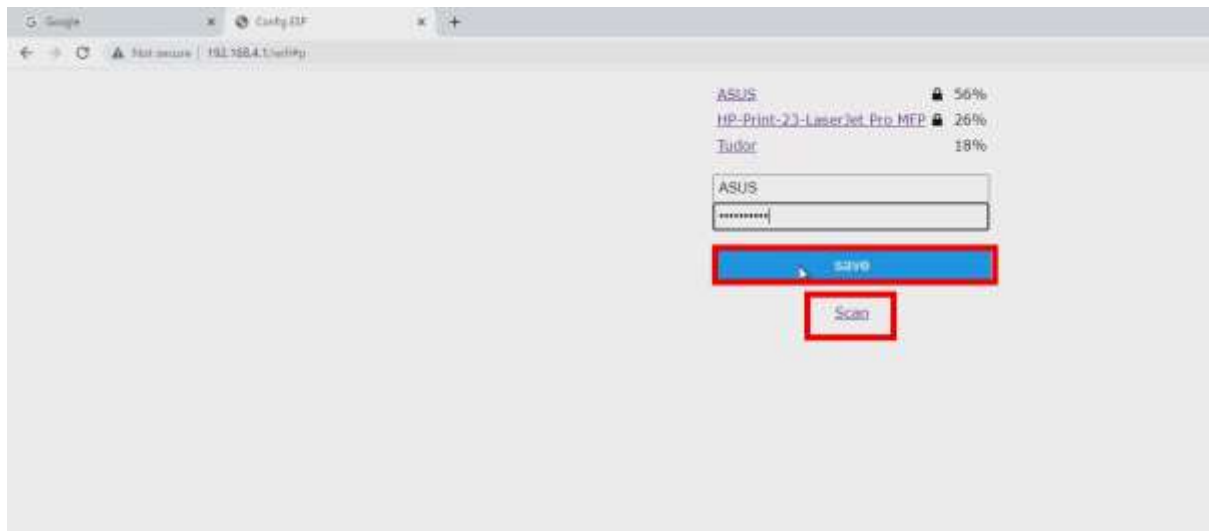
First connect with your laptop to the WiFi access point that MegaCell Charger creates when there's no WiFi Connection set, or if the old connection is not available.

You will see Start conf portal on the display. The access point name and the password is also shown on the display.



Select the access point name from your Laptop/PC WiFi search tab and enter the password.





After you have inserted the password shown on your MegaCell Charger you should be redirected to the WiFi configuration Page. If for some reason you don't get there, manually type the IP 192.168.4.1 into your browser to get to the WiFi manager Page.



Click on the Configure WiFi button, and after this click on scan to see the available networks.

Select the id, add the password and click the save button.

The charger is now connected to your WiFi network.

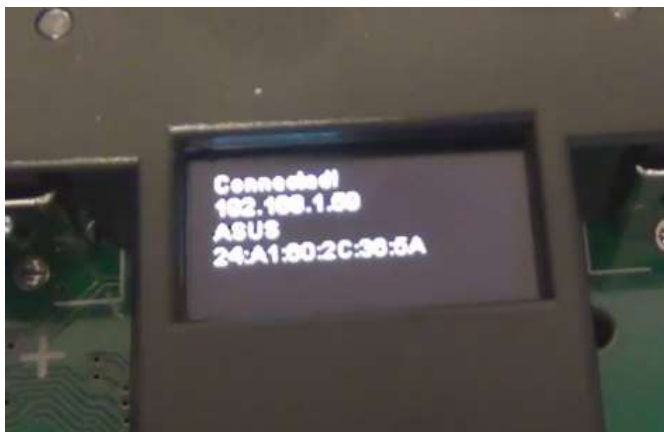
## 8. ADD THE CHARGER TO YOUR WIFI NETWORK, USING THE WPS METHOD



You can connect your device through your router using the WPS Method.

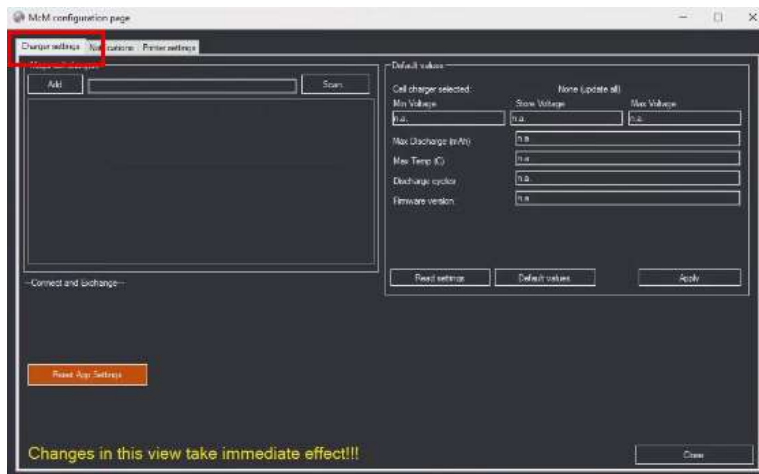
If there's no saved WiFi info, or the old connection is not available, the charger will try to connect first through WPS.

Most routers have a button, which will allow the charger to connect without having to type in the password. Keep that button pressed a few seconds, until the router enters in the WPS mode.



The connected message and the IP address should appear on the display in a few seconds after the WPS has been activated on your router, and the MegaCell Charger completed the connection.

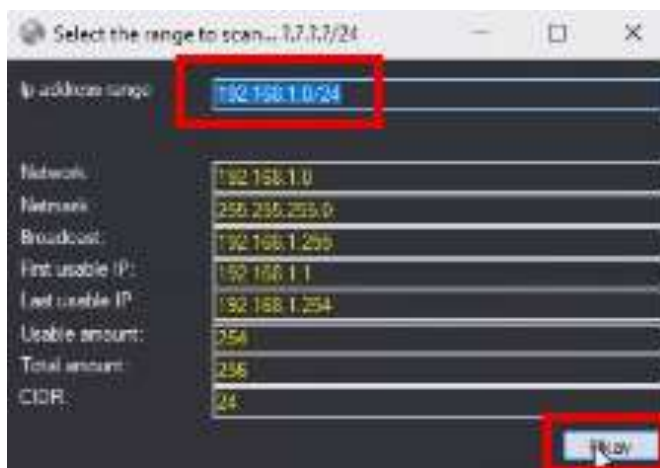
## 9. ADD A CHARGER AND SET-UP.



First connect your device to the laptop/PC.

The device and the laptop/pc must be connected to the same internet network.

In the software interface click on the gear icon, and on the McM configuration page select Charger settings tab.

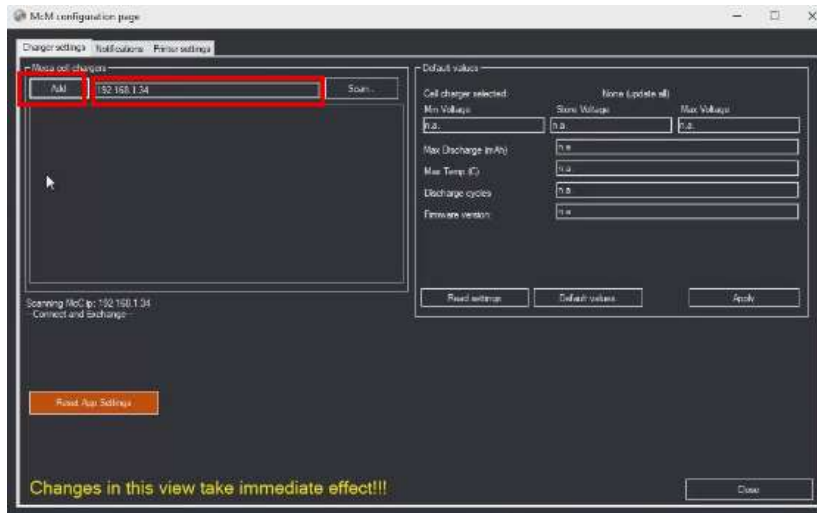


Click on the scan button, and when the select to range scan window appears, select an ip range for the software to scan, and click on the scan button.



After the scan is complete select your device ip, click on add chargers button and your charger will be added inside the software.





Another method is to get the IP of your device and type it in the text field next to the add button.

If the IP is correct you should see the charger added in the list below, and the cells appearing in the main window.

Thanks to the DIY community for supporting this project!

For more information, please visit [megacellcharger.com](http://megacellcharger.com)

All the best from the DeepCycle-Power Team.